



Impact Report 2023



Dear Impact NW Supporter,

We haven't given up on Portland. Neither have you.

As an Impact NW supporter, you want nothing more than to see our region regain its footing and end the housing and homelessness crisis. You want solutions that are humane but that also restore the city center and other areas to thriving communities for everyone.

At Impact NW, we want this too. And we are doing something about it. Thanks to our supporters, Impact NW just completed its most-successful year ever at a time when our community has needed us more than ever. We served a record 30,000 people in the past year, both with "upstream" programs for those at risk of losing their housing and by helping hundreds avoid the tragedy of homelessness.

With our Homelessness Prevention Strategy, we are also helping develop longer-term solutions to the crisis, in partnership with other nonprofits. We are helping our community better understand the causes and solutions to the housing and homelessness crisis. Ours has been a powerful response to the challenge of our generation. Thank you for generously supporting our mission at this critical time. Together, we are doing something to both keep people housed and to solve our challenges long term.

Thank you for believing in Impact NW and our community. We will never give up.



"Portland Is What We Make It," mural by Wieden+Kennedy (2023), 224 NW 13th Ave.

Andy Nelson
EXECUTIVE DIRECTOR

Kendra Johnson
DEPUTY DIRECTOR

Rosa's Story

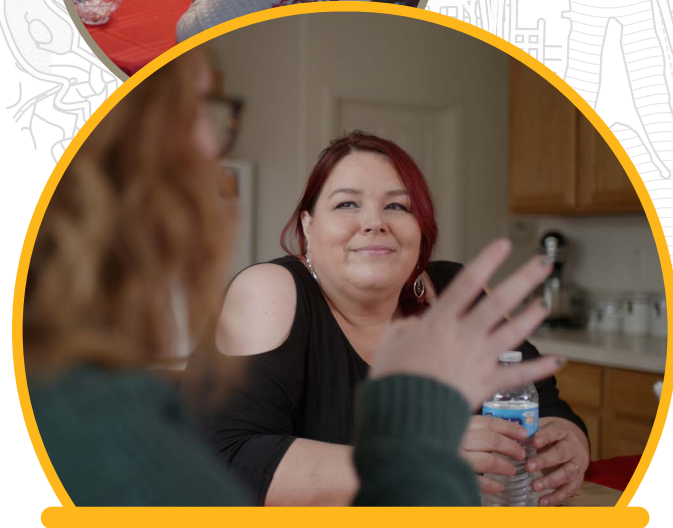


Impact NW made us
feel like we mattered

Like too many of our neighbors, Rosa and her family faced a financial emergency that cost them their housing. They spent years unhoused, finally settling on a one-bedroom motel room they could barely afford. Rosa was desperate to find a permanent home for her family of five.

That's when she found Impact NW through our program for Veterans and their families. Connecting with an Impact NW case manager, Rosa and her family began to heal and find the support they needed. Impact NW helped Rosa and her family get emergency funds to cover the costs of the motel and their storage unit. Impact NW helped ensure that the family had access to healthy food and, ultimately, a new home where they can live for years.

Today, Rosa and her family are thriving.

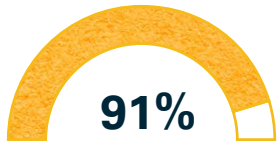
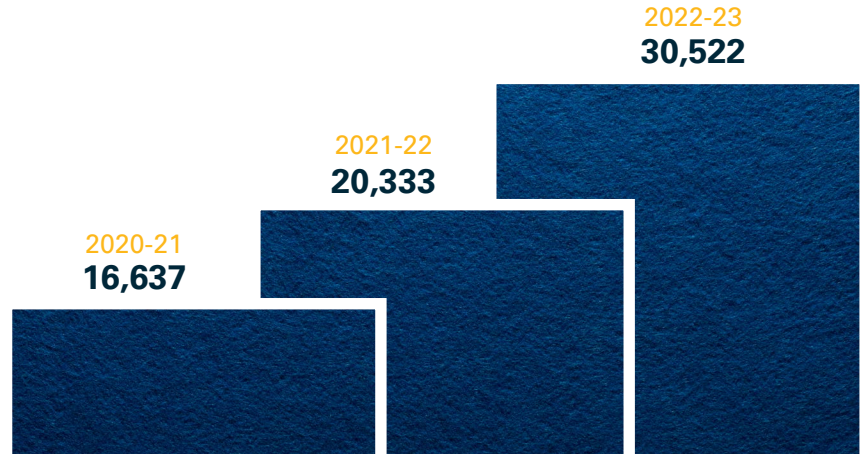


Rosa and Her Family
IMPACT NW PARTICIPANTS

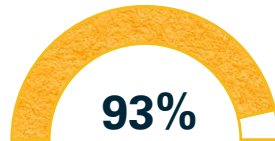


Our Impact Today

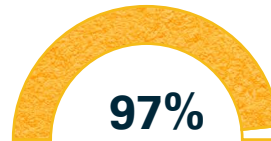
Over the last three years we increased our services 83%



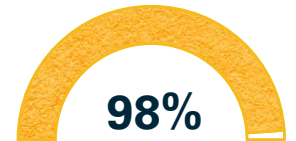
of clients say that Impact NW helped to strengthen and/or stabilize their lives



of clients say that Impact NW helped them connect with opportunities, resources or services



of clients agree that Impact NW respects their personal and cultural values

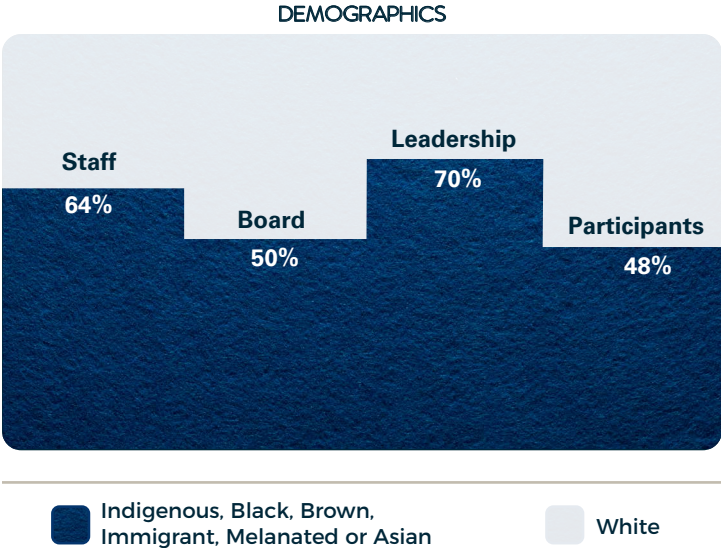


of households have maintained permanent housing

Diversity, Equity, and Inclusion

Impact NW is driven to strengthen its diversity, equity and inclusion practices for the more than 14,000 Melanated people we serve each year.

We are dedicated anti-racists who interrogate our own practices and those that our clients navigate.



Our Voice

We believe that using our voices is a powerful way to create change.

At Impact NW, we know that services alone won't solve our housing and homelessness crisis. But, providing services to keep families housed combined with advocacy will.

We are expanding our advocacy efforts and offering opportunities for you to join. Join us as we share information and get into action to prevent homelessness.

Visit www.ImpactNW.org/advocacy to learn more about Impact NW's Homelessness Prevention Strategy.



"Pambiche Mural," mural by Emily Beeks and Rachel Oleson (2011), NE Glisan and NE 28th Ave.

Donor Highlight



Barry and Marilyn Hendrix
IMPACT NW DONORS



We admire the great work that Impact NW does, supporting people to find and maintain housing. We hope our Legacy gift will help the organization continue to do great work in the community.

After many years of engagement with Impact NW; witnessing the evolving needs of the community and the individuals helped by Impact NW, Barry and Marilyn wanted to make a lasting legacy.

To make the greatest impact they can, Barry and Marilyn are leaving a legacy gift in their living trust for Impact NW's mission to prevent homelessness.

Join Barry and Marilyn in the Impact Legacy

Contact Ada Dortch at adortch@impactnw.org to talk about legacy giving options.





www.ImpactNW.org

Leadership Team

Ada Dortch

Director of Development & Advocacy

Andy Nelson

Executive Director

Eddie Almeida

Finance Director

Gina Kim-Folston

Director of Youth & Family Services

Jana Hak

Director of Housing & Safety Net Services

Julie Houston

Director of Early Childhood & Family Services

Kendra Johnson

Deputy Director

Lydia Gray-Holifield

DEI Director

Mamak Tabrizian

Director of Senior Services

Wildia Gonzalez Santos

Director of People and Culture

Board of Directors

Demian Lucas (Co-chair)

Francis Sallah (Co-chair)

Patrick Shen (Secretary)

Phil Dollar (Treasurer)

Amy Gee

Anthony Eddings

C. Maurice

Chad Melvin

Chris Schrerer

Hai Nguyen

Jeff Foley

Linda King

Nural Willis III

Richard Diforio

Robert Countryman

Shelley Yoder

Sonal Shah