



Impact Report



2022



IMPACT NW

PREVENTING HOMELESSNESS
SINCE 1966



Everyone Deserves a Beautiful Life

This is one of our guiding tenets at Impact NW. Yet, it seems almost radical these days. So much of what we see and hear today is divisive and cynical. The message we hear too often is that everyone is on their own, left to compete for scarce resources.

At Impact NW, we see the beauty in people and we put people first. We know that everyone has a dream and deserves a chance to live it. Our mission is to bring people together to support one another - to create a community of care. We believe that everyone can win when we realize there's more than enough for everyone.

As a supporter of Impact NW, you are showing that you, too, see the beauty in people. You believe that by investing in people and in preventing homelessness, you not only make life better for 22,000 people a year. You make life better for all of us.

Your support this past year really paid off. When our community needed us, perhaps more than ever, you joined with other supporters to raise record levels of support for Impact NW. We responded by serving 35% more people. We also discovered just how deeply we change lives: More than 90% of our clients tell us that we helped them to stabilize and strengthen their lives. That's been our promise. And it's great to have evidence that our mission works.

We are also proud that half the people we serve identify as Indigenous, Black, Brown, Melanated, Immigrant or Asian, as does our staff; we know that Melanated people are much more likely to experience housing instability.

Thank you for supporting Impact NW and thousands of people in our community and for giving them what they most want - a beautiful life.



ANDY NELSON
EXECUTIVE DIRECTOR



KENDRA JOHNSON
DEPUTY DIRECTOR



Our Impact Today

34% more people served in 2022

Impact NW served **22,033** participants in 2022 vs **16,457** participants in 2021.

Thanks to Impact NW supporters, we raised over **\$1.3M** to prevent homelessness, **\$200,000** above the fundraising goal.

2021 participants



2022 participants



93%

of households
have maintained
permanent
housing

92%

of all participants
say Impact
NW helped to
strengthen and/or
stabilize their lives

86%

of participants say
Impact NW helped
them connect
with opportunities,
resources or services

Voices of Impact



"I couldn't have made it this far without everyone at Impact. They have helped in so many ways."

- Senior services participant

"When I came to Impact NW, I was homeless with 3 children in a DV shelter. Now me and my children are in a safe and stable home."

- Housing program participant

"In times when everything feels so uncertain and it can feel shameful to need assistance, I was always made to feel like I was important and what I needed was important too. I wasn't forgotten."

- Energy Assistance participant

"I don't know what I would do without this help."

- Food market participant

"I am very grateful for my housing. I appreciate all the work Impact NW put in making sure me and my family have a place to call home."

- Housing program participant

"I've made my impact by starting a school Black Girl Magic club and the BIPOC Boyz Club to help students of color feel that they have the opportunity to be their full selves."

- SUN School Site Manager

"The biggest impact that I have made is helping veterans and their families find and maintain permanent housing."

- Program Coordinator for Veteran Families

"We assist clients by being there for them when they are emotionally vulnerable."

- Housing Program Specialist

"I support Impact NW for their continued focus in preventing homelessness."

"We support the community by making sure children have access to the resources they need to do well in school and supporting the parents with all the different things that the pandemic has brought them."

- People and Culture Director



FRED KAWABATA

IMPACT NW DONOR

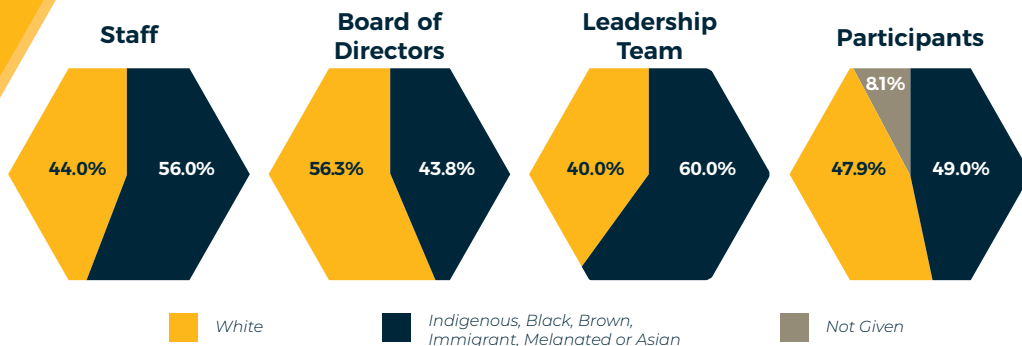
Diversity, Equity, and Inclusion

"Being an anti-racist organization means that we will not tolerate any type of racism and when people seek services from Impact, they won't be treated differently because of the color of their skin. People want to come into a place where they feel valued and respected, so at Impact NW we make sure that when people walk through our doors or meet with staff, they are treated with kindness and respect."

- Lydia Gray-Holifield, Impact NW
Diversity, Equity and Inclusion Director

97%
of participants
agree that Impact
NW respects their
personal and cultural
values

93%
of Indigenous, Black,
Brown, Melanated,
Immigrant and Asian
participants say
Impact NW helped
to stabilize and/or
strengthen their lives





Robin's Story

Ms. Robin is a senior citizen from Northeast Portland. 12 years ago she faced a medical emergency, altering the course of her life. A catastrophic aneurysm left her in a coma - needing to re-learn how to walk, talk, complete daily activities, and recognize family members. She felt alone and became dependent on others in a nursing facility. More than anything, she wanted to regain her strength and ability to become more independent. This is where Impact NW met her.

With patience, care, and respect, Impact NW supported Ms. Robin with her goal to move into a safe and stable apartment. While in her new place, Impact NW staff provided Ms. Robin with in-home care, case management, resource navigation, transportation, access to healthy food, money management, rent and energy assistance. Ms. Robin was able to see family at holidays and celebrations, and Impact NW helped decorate Ms. Robin's apartment with photos of all her family members at these events.

"Without Impact NW, people like me with disabilities - we'd be lost. Impact NW is a net for people that need help." - Ms. Robin

Today, Ms. Robin is living in her beautiful apartment and taking classes at Portland Community College. Impact NW staff continue to visit and support Ms. Robin in her goal of staying safely and stably housed.

"It's really important that programs like this exist because so often people are able to just be removed, and so we forget about them - imagine this vibrant woman 12 years ago and people were just going to forget about her... [Miss Robin] is able to continue to be part of the world." -Abbey, Impact NW Case Manager

"Because Robin was able to be stable and know that her home is going to stay HER home, she is able to work towards other things that make her happy."

— Abbey, Impact NW Case Manager



MS. ROBIN
PROGRAM PARTICIPANT



www.ImpactNW.org

Board of Directors

Adrienne Livingston
Amy Gee
Anthony Eddings
C. Maurice
Chad Melvin
Chris Scherer
Demian Lucas
Francis Sallah
Hai Nguyen
Jeff Foley
Lisa Kaner
Patrick Shen
Phil Dollar
Richard Diforio
Robert Countryman
Shelley Yoder

Leadership Team

Ada Dortch
Director of Development and Advocacy

Andy Nelson
Executive Director

Beth Gibbs
Director of People & Culture

Eddie Almeida
Finance Director

Jana Hak
Director of Housing & Safety Net Services

Julie Houston
Director of Early Childhood Services

Gina Kim-Folston
Director of Youth and Family Services

Kendra Johnson
Deputy Director

Lydia Gray-Holifield
DEI Director

Mamak Tabrizian
Director of Senior Services