



2010-2011 ANNUAL REPORT



IMPACT NW

A Community Of Support
Since 1966

IMPACT NW'S MISSION

is to help people achieve and maintain self-sufficiency and to prevent and alleviate the effects of poverty.

OUR WORK

Throughout its 45 year history, Impact NW has served hundreds of thousands of low-income children, youth, families, seniors and adults with disabilities in Multnomah and Washington Counties, OR and Clark County, WA. We provide the following services:



SERVICES FOR SENIORS & ADULTS WITH DISABILITIES

Promote independence, dignity, and quality of life by helping seniors and adults with disabilities remain and thrive in their own homes.



SERVICES FOR SCHOOL-AGED YOUTH & THEIR FAMILIES

Provide school and community-based educational, pre-employment, and life skill support to youth ages five through 24 in the metro area.



SERVICES FOR BASIC NEEDS

Provide comprehensive stabilizing and sustaining services to help families and individuals achieve and maintain long-lasting self-sufficiency.



SERVICES FOR YOUNG CHILDREN & THEIR FAMILIES

Promote the consistent nurturing, healthy growth and development, and school-readiness of children ages zero through five by providing education, support, and guidance.

BOARD OF DIRECTORS

- Kirsten Day, *Chair*
- Barry Hendrix, *Vice Chair*
- Susan Priddy, *Secretary*
- Phil Dollar
- Christine Dunn
- Debra Flickinger
- Yassi Iraipanah
- Robert McCarthy
- Shirley Rogers
- Jerry Rosette
- Jay Stammer



A MESSAGE FROM OUR EXECUTIVE DIRECTOR

Impact NW saw another year of growth in many ways in 2010-2011. Most importantly, we made a difference in thousands of lives as we fulfilled our mission to support people in achieving and maintaining self-sufficiency and to reduce poverty. You'll read more about those success stories and the associated statistics in the report. But as importantly, Impact NW focused more attention on creating a sustainable business model that will ensure our ability to meet the increasing need for our services for decades to come.

Just as we work with clients to achieve individual financial independence, Impact NW spent the year devising a business model that will allow us as an organization to "walk our talk". We are becoming **decreasingly dependent on government funding by increasing our earned income and diversifying our funding streams**. We are targeting our efforts to **increase the depth and measurable impact** of our programs on low income children and families. To reduce the inefficiencies caused by the multitude of small but impactful non-profits, Impact NW **completed 3 mergers in 2010-2011, and we are engaged in two more as of this writing**. As a result, we've increased the depth, breadth and effectiveness of the services provided by each and all organizations involved.

The stories of our success abound. That path to success requires courage and self-discipline, the support of those with resources we don't have but need, and keeping our vision firmly alive yet adapting it to the changes that are part of life's journey. The same is as true of an organization's success as for those served by and serving at Impact NW.

Susan I. Stoltenberg
Executive Director

2010-2011 HIGHLIGHTS

SHARING OUR STRENGTH

Impact NW is deeply committed to helping other worthy non-profits in our region thrive. One way we do this is by serving as a fiscal sponsor for organizations that might lack the staffing and resources to manage donations themselves. **Impact NW offers our legal and tax-exempt status to groups whose work relates to our mission - allowing them to continue doing great work in our community while developing a valuable, long-term partnership that benefits our clients.** Currently, we are the fiscal sponsors for nine flourishing nonprofit organizations, including the Black Fatherhood Project, the Somali American Coalition of Oregon, the Children's Opportunity Fund of Washington County, and the SBCCA.



AKA SCIENCE

Making sure that children in our community have the tools they need to succeed in school - regardless of their family income - is one of Impact NW's top priorities. Because many area schools have had to cut the lab portion of their science classes, we have recently started implementing the AKA Science program. AKA Science provides fun, hands-on after school learning opportunities to approximately 1,000 children in grades K-6 each year. **Participating students get excited about science and about school in general, thanks to our program: 75% of recent AKA Science participants demonstrated an improved attitude towards science and an increase in their school attendance!**

SERVING THE SLAVIC COMMUNITY

Multnomah County's Slavic community has increased by 25% since 2000. Most of these Slavic immigrants left their country with little formal education, little or no English proficiency, and large, multigenerational families. Because of this, they are often isolated from community resources and left vulnerable to poverty, unemployment, and homelessness. Impact NW is a leader in serving this at-risk community sensitively and effectively. Impact NW is Multnomah County's Slavic-specific Service Provider; our work is led by ten staff members who are part of the Slavic community and understand their challenges firsthand. We reach Slavic clients through our Slavic Advisory Committee, a monthly Slavic Women's Group, Slavic client focus groups, and targeted outreach to Slavic community groups and churches. **Last year, nearly one-fifth of all our clients were Slavic families and children.**

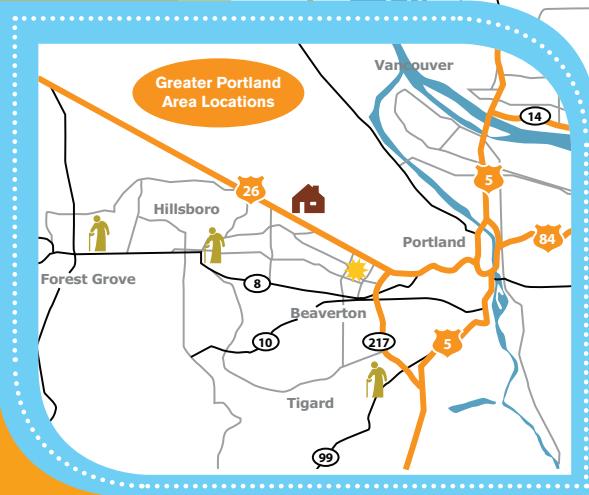


GROWING SUSTAINABILITY

It's no secret that the Portland metropolitan area has been hit hard by our nation's economic challenges. As a result, government agencies have been forced to make cuts to vital programs that serve low-income families and individuals, including many managed by Impact NW. Because we know that our services are needed now more than ever, Impact NW has worked diligently to draw upon our Community of Support - generous donors, foundations and business partners - to overcome these budget cuts and emerge stronger than ever. **In fact, our 2010-2011 revenue exceeded the previous year's by nearly a million dollars with a 50% increase in individual giving!**



IMPACT NW SERVICE SITES

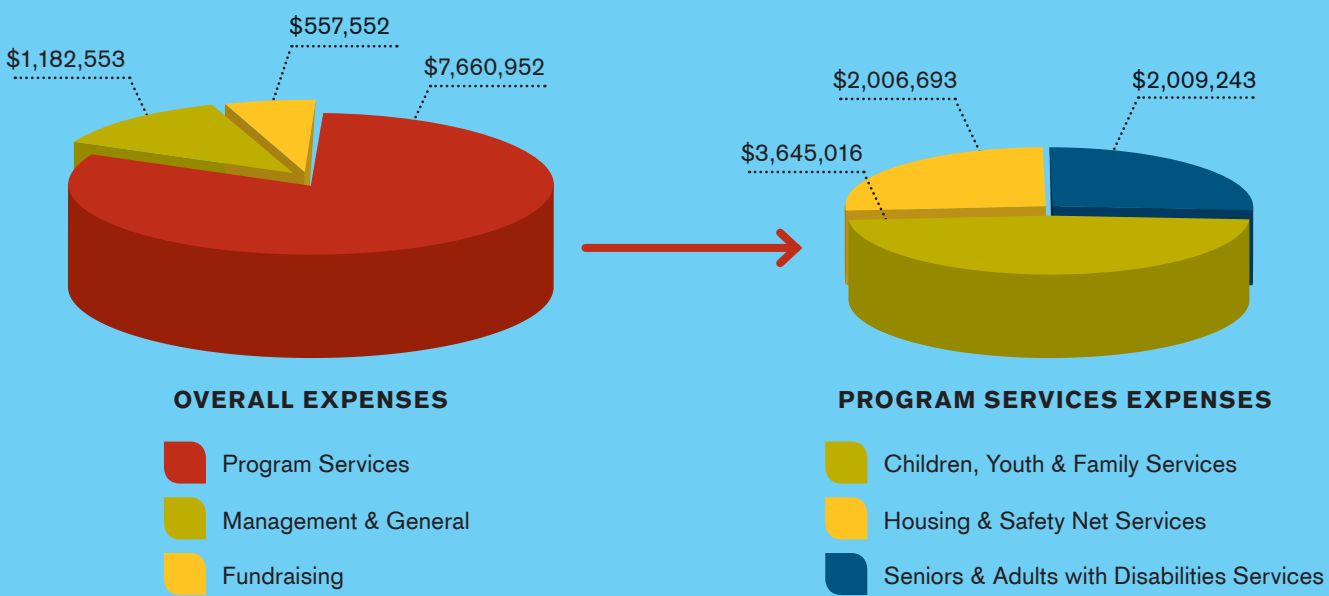
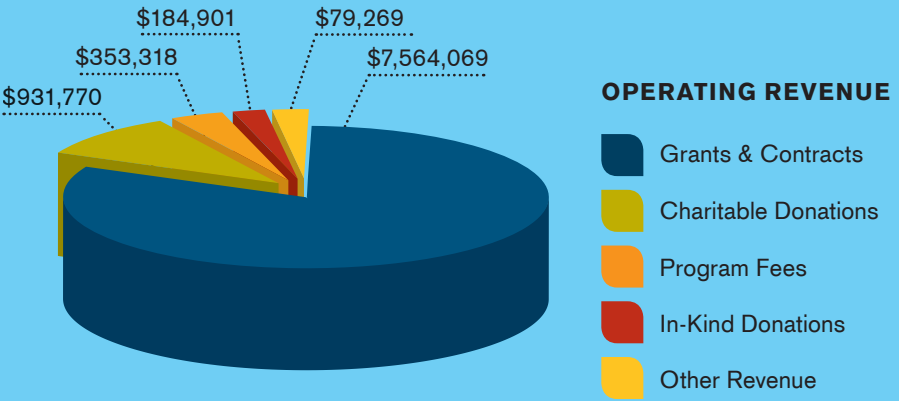


- SUN/Community Schools
- Skill Building and Supportive Services for Youth
- Regional Service Centers
- Transitional Housing and/or Resident Supportive Services
- Congregate Housing Services
- Resident Services for Seniors and Adults with Disabilities
- Stabilizing Services for Seniors and Adults with Disabilities



PROGRAM	PURPOSE	PEOPLE SERVED	COMMUNITY IMPACT
CHILDREN, YOUTH & FAMILY			
Parent-Child Development Services	To provide services for families with children age birth to five to promote positive parenting, healthy child development and school readiness. We provide a safe and nurturing environment in which families can receive developmentally and culturally appropriate education, guidance, and support services.	233 Children	98% of parents report they show an improvement in their problem solving skills, 87% show positive parenting skills and strategies and 95% of participants report they have the ability to support their child in getting ready for school.
Schools Uniting Neighborhoods (SUN) Community Schools	Support the academic achievement and social enrichment of youth and to improve the lives of children, their families and the community by developing schools into community learning centers, enhancing educational opportunities for stronger communities and later life success.	2,629 Students	Teachers reported the most improvement in overall academic performance for students in Community Schools. 82% of regular program participants show improved benchmark math scores, 80% show improved benchmark reading scores, and 95% of the 9th, 10th, 11th graders returned to school in the fall.
Social Support Services for Educational Success	To provide supportive services to adolescents age 12-17, particularly to youth at risk of dropping out or truancy, with the goal of helping them remain in school, re-enroll or complete their GED.	129 Youth	93% of youth showed academic improvements, 89% of youth demonstrated improvement in school attendance, and 96% demonstrated improvement in self-esteem or cultural pride.
HOUSING & SAFETY NET			
Energy & Utility Assistance	To provide energy & utility assistance to support low-income households	13,640 Individuals 4,667 Households	Provides stability for thousands of individuals by meeting the most basic of human needs, helping them to maintain their housing and keep their heat and electricity running during the coldest, darkest months of the year.
Housing & Safety Net Services	To provide housing and supportive services to families and individuals that are homeless or at risk of becoming homeless, helping them transition from homelessness into stable housing, living wage jobs and a supportive social network.	1,614 Individuals 499 Households	Vulnerable families achieve stability, allowing them to focus on building skills that will help them lead independent lives.
SENIORS & ADULTS WITH DISABILITIES			
Transportation Services	Program makes it possible for Seniors and Adults with Disabilities to get to medical appointments, do their shopping, and participate in health promotion activities that keep them engaged in their community.	699 Individuals	24,122 Rides for Seniors and Adults with Disabilities allowing them to have extra mobility throughout the community, connecting them with vital services, which reduces isolation, improves health and longevity.
Congregate Housing Services Program & Resident Services	To improve the participant's quality of life by delivering services in a compassionate, efficient and cost effective manner while promoting independence and personal dignity.	694 Individuals	CHSP continued to offer meals to non-CHSP residents at the cost of \$5.50 per meal, 106 Resident Services clients received Benefits/Entitlements Assistance, and 91 Resident Services clients received Eviction Prevention Services.
Senior Guardianship Assistance Program (Senior GAP)	Supports the health and independence of vulnerable seniors, helping them remain in their own homes, surrounded by the communities with which they are familiar.	264 Individuals	98% of participants became or remained physically and financially safe and 95% of participants had all of their bills paid on time.

2010-2011 FISCAL YEAR



BALANCE SHEET	2010-2011
Total Assets	\$4,945,526
Total Liabilities	\$2,071,806
NET ASSETS	
Unrestricted	\$2,660,660
Temporarily Restricted	\$192,515
Permanently Restricted	\$20,545
Total Net Assets	\$2,873,720
Total Liabilities and Net Assets	\$4,945,526
Total Operating Revenue	\$9,113,327
Total Expenses	\$9,401,057



IMPACT NW DONORS



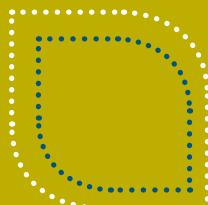
GOVERNMENT, CONTRACT & FOUNDATION PARTNERSHIPS

Access to Recovery
Alliance for Children and Families
Ann and Bill Swindells Charitable Trust
Ausplund Tooze Family Foundation
Buckman Elementary School PTA
Cascade Centers
Cascade Management
Charis Fund
Children's Trust Fund of Oregon
City of Portland, BHCD
City of Portland, C3 program
Easton Koehler Family Fund of the OCF
Gap Foundation Money for Time Program
Harvest Foundation
Hollywood Senior Center
Homeforward
Hoover Family Foundation
Howard Wallis Irwin & Dorise Carlyon Irwin Foundation
HUD Community Planning & Development Div.
Human Solutions
J.E. Fehsenfeld Family Foundation
J.W. & H.M. Goodman Family Charitable Foundation
JFR Foundation
Joseph E. Weston Public Foundation of the OCF
Juan Young Trust
Jubitz Family Foundation
Juliet Ashby Hillman Foundation
Moreland Presbyterian Church
Multnomah County
Northwest Health Foundation
Northwest Regional Educational Laboratory
Oregon Commission for Voluntary Action and Services
Oregon Department of Education
Oregon Department of Human Services
Oregon Heat
Oregon Partnership

Oregon University System
Pacific Power Foundation
PacificSource Charitable Foundation
Portland Children's Investment Fund
Portland Public Schools
Portland State University
Portland Women's Foundation
R.L. Woolworth Foundation
Ride Connection
Robert Brady Charitable Trust
Rose E. Tucker Charitable Trust
Safeco Insurance Foundation
Schamp Family Fund of the OCF
Southeast Uplift
The Collins Foundation
The Herbert A. Templeton Foundation
The Jackson Foundation
The Lindgren Foundation
The Neighborhood Partnership Fund
U.S. Bancorp Foundation
United Way of the Columbia-Willamette
Valley Community Presbyterian Church
Wal-Mart Foundation
Washington County Office of Community Development
Washington County, Department of Aging & Veterans Affairs
Wessinger Foundation
Women's Care Foundation

FRIENDS OF IMPACT NW GIVING SOCIETY

Kirsten J. Day
Richard Deats
Phil Dollar
Eileen Drake
Annie Edwards
Mary Fink
Brigid Flanigan
Christie Gaye



Thomas Harburg and Alida Rol
Tanya Harding
Barry & Marilyn Hendrix
Fred Kawabata
Geraldine Kawabata
Kirsten Kays
Ross E. Lienhart
Robert Matheson, MD
Spencer McNeill
Susan E. Priddy
Craig and Debra Ramsey
Shirley Rogers
Kim Sisul
Henry D. Specht
Jim Stocks
Bruce and Robin Stoltenberg
Jerry Rosette
Susan Stoltenberg
Ruth Szilagyi
David & Christine Vernier
Traci Wheeler
Michael and Patricia Whiteford
Easton Koehler Family Fund of the OCF
Silver Oak Advisory Group
Katherine and John Zelko



\$5,000+

CH2M Hill
Emerick Construction Co.
Genentech, Inc.
Hoffman Construction Co.
JPMorgan Chase
Logitech
Monsoon Commerce
Nordstrom, Inc. - Contributions
NW Natural Gas Company
Pacific Power Employee Appreciation Fund
PCC Structurals
Providence Health & Services
Safeco Insurance Foundation
Temp Control Mechanical
Trust Management Services, LLC
Turner Construction Company
Junki Yoshida

\$2,000 - \$4,999

Alliant Systems
The Boeing Company
Brown Paper Tickets
Capital Pacific Bank
Richard and Patti Falaschetti
PECO Manufacturing
Speed's Supertow
The Standard
Target Corporation
Laurie Weiss

\$1,000 - \$1,999

Lynne and David Bangsund
Benson Industries
Carr Construction, Inc.
Coffman Excavation
Kirk Davis
DeaMor Associates, Inc.
Dynalectric Company
GBD Architects
GNSA
John Grady
Group Mackenzie
Kohl's
Jerilyn Marler and Dan Davis
Morrow Meadows Corporation
Leslie Naman
Don and Candace Payne
Western Partitions Inc.

\$500 - \$999

Deborah Banks and David Clark
Shelby Cass
Charter Mechanical Contractors, Inc.
Columbia Wire & Iron Works, Inc.
Paul Dockter & Pamela Kelley-Dockter
Floor Factors
Fred Shearer Sons, Inc
Robert Geddes
Heffernan Group
The Horse Brass Pub
Imelda's Shoes
JH Kelly, LLC
Kids At Heart Toys
Susan Kneuppel
Cade and Julie Lawrence
Eini C. Lowell
Rebecca and Greg Mowe
Sarah T. Neidhardt
Oregon Electric Group
Oregon Medical Evaluations, Inc
Performance Contracting, Inc
Philadelphia Insurance Companies
Prost German Pubs, Inc.
Schonert and Associates, Inc
Standard Insurance Co. Charitable Trust
Dawn St. Clair
Streimer Sheet Metal Works
Kathy Swift
Julia J. Wentworth and Scott A. Gunderson
West Coast Bank
Bob Williams

\$250 - \$499

Lockett Albritton and Courtney Taylor-Taylor
Sharron L. Brainard
Sherry Bural and Julie Barbour
Brian and Becca Davis
Marisa A. Decristoforo
Rebecca Eberle
Susan K. Freed
Karen Frey
Allen R. Greene
Scott A. Gunderson and Julia J. Wentworth
Diana Hall
Harriet Hegge
Scott Herson-Hord
Amy Houchen and Richard Wise
Robe Imbriano
Linda and John Koser
Christopher Lauer
Esther Lewis



Scott Lewis
Faith Luch
Mike and Diana Marsden
Mink
Katie Morey
Leslie J. Munson and Thomas O. Munson
Anhvu Nguyen
Robert Nibley
Craig Norman
Katherine and Steven Pedery
Mary Anne Peterson
Presents of Mind
Bob and Gina Proebstel
Gary Purpura
Kristin Rios
Charles Rooks
Catherine Samson
Karen and Morris Schademan
Richard Shannon
Shedrain Corporation
Elizabeth Smith
Rhonda Smith
Jay Stammer
Suzanne E. Sullivan and Frederic N. Johnson
Mamak Tabrizian
Jordan Thierry
Kevin S. Thomas
Karmin Tomlinson
Mabel B. Walters
Jeannette Warner
Suzanne Washington and Consuelo Saragoza
James Webster
Allan Weiland
Renata and Randy Wilson
Kathleen Wood
Miles and Carolyn Woofter
Ms. Deborah Wright-Shillingburg and Edward J. Shillingburg
Diane Yatchmenoff
Nathan Young





IMPACT NW

A Community Of Support
Since 1966

www.ImpactNW.org

info@impactnw.org



[Facebook.com/ImpactNWsince1966](https://www.facebook.com/ImpactNWsince1966)



REGIONAL SERVICE CENTERS

Brentwood-Darlington Community Center

7211 SE 62nd Avenue
Portland, OR 97206
503-988-5961

Dancing Tree Family Center

10055 E. Burnside Street
Portland, OR 97215
503-988-6000

SE Multicultural Services for Seniors & Adults with Disabilities

4610 SE Belmont
Portland, OR 97215
503-988-6300

