



# 2014 - 2015 ANNUAL REPORT



**IMPACT NW**

*Since 1966*

INSPIRING HOPE. EMPOWERING INDEPENDENCE.

[WWW.IMPACTNW.ORG](http://WWW.IMPACTNW.ORG)



HELPING PEOPLE  
PROSPER THROUGH A  
COMMUNITY OF SUPPORT



## Content

Message from Executive Director	3
Highlights	4
Program Overview: Early Childhood	5
Program Overview: Youth + Family	6
Program Overview: Seniors + Adults with Disabilities	7
Program Overview: Housing + Safety Net	8
Power of One Awards	9
Annual Garden Party	10
Impact in Numbers	11
Who We Are	12
Community of Support	13-14



# MESSAGE FROM SUSAN

Impact NW Executive Director



In 2014 - 2015 Impact NW enjoyed another year of more moderate growth, even after more than a decade of rapid growth despite a faltering economy. We are responding to the needs of our community, through cutting edge, innovative solutions. These solutions are developed by deploying best practices informed by our case and data management software, Collective Force™, which Impact NW developed. We now are making an even bigger impact in helping children, seniors, veterans and families progress toward prosperity.

Valuable partnerships continue to be a vital part of our work. It's the very foundation by which we began back in 1966 and that value remains today. By continuing to share Impact NW's infrastructure with the YWCA of Greater Portland and more than a dozen fiscal sponsored initiatives like Portland Metro STEM

Project, Squires and the Children's Opportunity Fund of Washington County, we enable partners in social change to minimize their overhead and invest more deeply in programs that affect the change we all seek: individually and in the communities we share.

On the following page are just a few examples of the innovative ways Impact NW rallied a community of support to help people prosper in 2014-2015. While simultaneously growing to meet ever-emerging needs in our community. The most important partnership is YOURS – our Community of Support. Your involvement is a critical cornerstone to that foundation of support upon which a more hopeful, compassionate future of shared abundance is built for all of us.

Sincerely and with abundant gratitude,

A handwritten signature in black ink that reads "Susan I. Stettinburg". The signature is written in a cursive, flowing style.

# HIGHLIGHTS 2014-2015

## STRENGTHENING THE PILLARS OF PROSPERITY



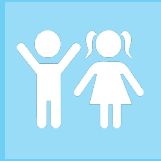
### IMPROVING THE HEALTH OF OUR COMMUNITY

As the market adapts to the Affordable Care Act, Impact NW has increased our partnerships with health care providers such as **Providence Health Systems**. We now serve the elderly, people experiencing hunger and others needing assistance navigating complex social service systems. These all improve our community's health while decreasing unnecessary medical system utilization.



### PROVIDING HOUSING FOR OUR VETERANS

Impact NW expanded its services to homeless veterans and seniors this past year. Serving over 18,829 people by providing housing, help navigating complicated social systems, reconnecting with families or forming new relationships of support and being that voice of encouragement with people who are all but forgotten despite their decades of dedicated service to us all.



### CREATING A COMMUNITY IN OUR SCHOOLS

We now have 5 SHINE (Schools Helping Involve Neighborhoods in Education) community schools in Washington County. Combined with our 11 SUN schools in Multnomah County, these 16 high performing programs improve student attendance, behavior and performance; increase parent engagement; and are especially effective in engaging those students and families most maligned by race, poverty and language.



### ENSURING A BRIGHT FUTURE FOR OUR YOUTH

Impact NW expanded its partnerships with large regional employers in the manufacturing industry, including Vigor Industrial and Daimler Trucks North America. Together creating a bridge for students from local schools to job experience and employment in the manufacturing industry through our Pathways to Manufacturing Program. This innovative program now serves five school districts in the metropolitan area.



### KEEPING FAMILIES SAFE & TOGETHER

Our early childhood programs are breaking new ground in helping reunite families with children in foster care safely, quickly and permanently. Partnering with DHS, Multnomah County, the Portland Children's Levy and foundations such as Spirit Mountain Community Fund and Hedco Foundation we support families in developing the supports and skills that will sustain them in their healing from the trauma and journey out of the crises that led to their family's disruption.



# EARLY CHILDHOOD

Impact NW's early childhood programs use home visits, parent-child playgroups, early intervention services and partnerships with other community organizations to help families interrupt generational poverty and ensure children ages newborn to five are warmly nurtured in homes free of abuse and neglect, are progressing physically and developmentally, and arrive at kindergarten ready to succeed in school and life.

**1,106**

children and their parents  
are stronger, safer and  
more stable

**100%**

of participating parents  
feel more confident in their  
parenting skills

**97%**

of the children participating  
are on track in their motor  
and social/emotional skills



# YOUTH & FAMILY

Impact NW helps students remain in school and graduate on time by providing positive adult role models and after school activities that engage students, family members, and community members.

We believe every student deserves access to the tools and resources necessary to grow into productive, independent adults regardless of their family's income or challenges.

**5,096**

youth received help to keep them on track to succeed in school and life

**96%**

of youth made progress in school attendance and academic performance

**81%**

of youth participating in the Independent Living Program are employed





# SENIORS AND ADULTS WITH DISABILITIES

Impact NW gives clients the tools and support they need to be healthy, happy, active, and to remain safely at home and in our communities.

We take a holistic view of healthy aging, addressing each client's physical, mental and emotional well-being. We are committed to helping our region's most vulnerable seniors and adults with disabilities access resources that enable them to remain successfully in their homes, while still being able to participate in our community.

**1,559**

elders received support they need to stay safe and remain healthy and active

**41,951**

rides to medical appointments, errands and social outings were provided

**98%**

of seniors exiting program remained independent in their own homes





# HOUSING & SAFETY NET

Impact NW provides a safety net for families in crisis with services that connect them to housing and energy assistance while supporting them as they move toward independence.

Impact NW's programs take a comprehensive view of poverty. We know that unless a family has their basic needs met, securing employment and permanent housing can be a daunting prospect. That's why we work with each family to develop individualized action plans providing the tools they need to secure a brighter future for themselves and their children.

**18,829**

individuals received services to ensure their independence and increase their prosperity

**95%**

of the families served secured permanent housing and have remained there

**3,305**

households received assistance with utility bills helping their families stay warm

# POWER *of* ONE AWARDS

Celebrating the work made possible by generous individuals, businesses and organizations that have supported us over the past year, while also engaging new community partnerships.



## Power of One Award

### Alicia Snowden & Umpqua Bank

Over the course of four years, Alicia Snowden and her 40-member Umpqua volunteer team have volunteered nearly 1,300 hours – donating their time, money, and supplies to help the AKA Science program flourish. Three times a year, they help the program bundle supplies and build between 65-80 science kits. Each AKA Science kit serves 16 kids for eight hours of activities and the Umpqua volunteers have built over 800 kits, serving almost 13,000 program participants.



## Yolanda Award

### Joseph Miles-Kelley

Joseph Miles Kelley, 19, joined Pathways to Manufacturing at Centennial High School. He applied for Gunderson's High School based training program and was accepted after graduating. He attended weekend welding trainings at Gunderson over the summer and was then offered a \$500 signing bonus and a full-time welder and pipe fitter position. This living wage position provided Joseph with an opportunity to be self-sufficient and a career pathway that will continue to provide economic independence.



# ANNUAL IMPACT NW GARDEN PARTY 2014

Impact NW's Annual Garden Party, held at the Portland Nursery, is our yearly fundraiser featuring a live and silent auction, local wine, food and entertainment. Our 2014 Honorary Garden Party Chair, Karen Whitman, business executives, community leaders, and caring individuals came together to support Impact NW's mission and to hear Ohna's inspiring story.

## Ohna's Story

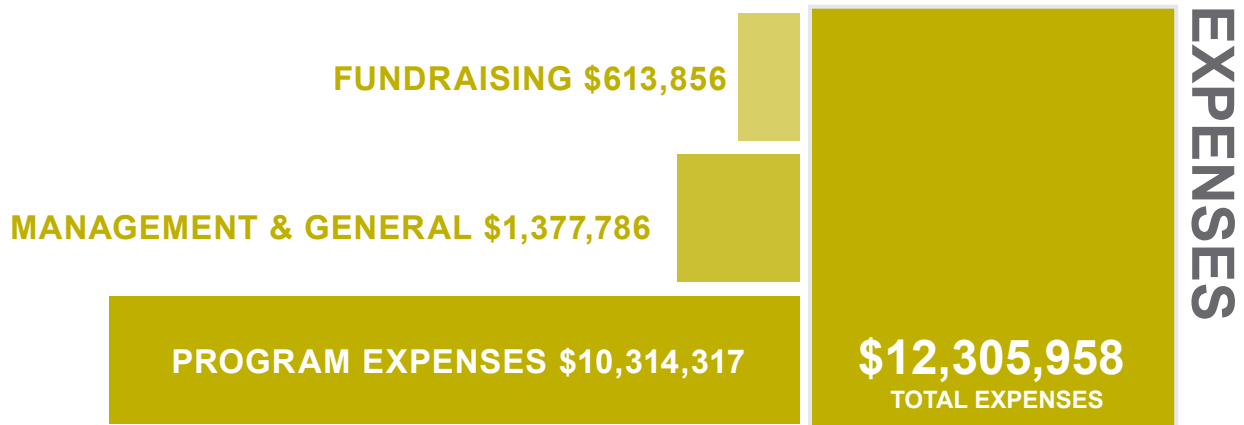
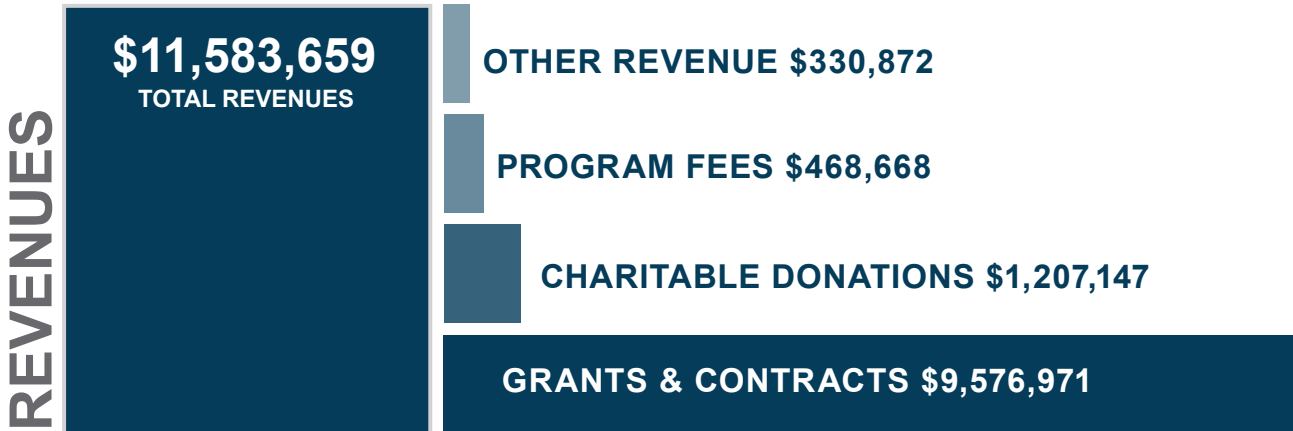


Ohna spent most of her life hearing the word “no.” She was told no so many times that she wanted to show herself that she could accomplish her dreams by saying “yes.” Yes to her education. Yes to her future. Yes to her dreams. It was her own vision for a brighter future that empowered Ohna to say yes.

At the young age of 16 Ohna made the difficult decision to leave home in order to focus on her education. Prior to leaving, she had taken on so many adult responsibilities that she was no longer able to live the normal life of a teenager.

Impact NW's Independent Living Program was the catalyst that helped Ohna find the independence and freedom that she so badly longed for in order to be a strong, happy person. The Independent Living Program helps young people like Ohna establish goals like going back to school so that they can say yes to their dreams.

# IMPACT IN NUMBERS







# OUR MISSION

To help people through a community of support.



## SERVICES FOR SENIORS & ADULTS WITH DISABILITIES

Promote independence, dignity, and quality of life by helping seniors and adults with disabilities remain and thrive in their own homes.



## SERVICES FOR SCHOOL-AGED YOUTH & FAMILIES

Provide school and community-based educational, pre-employment, and life skill support to youth ages five through 24 in the metro area.



## SERVICES FOR BASIC NEEDS

Provide comprehensive stabilizing and sustaining services to help families and individuals achieve and maintain long-lasting self-sufficiency.



## SERVICES FOR YOUNG CHILDREN & FAMILIES

Promote the consistent nurturing, healthy growth and development, and school-readiness of children ages zero through five by providing education, support, and guidance.

## BOARD OF DIRECTORS

Robert McCarthy, Chair  
Anne Mersereau, Vice Chair  
Kristin Koneck, Secretary  
Barry Hendrix, Treasurer  
Robert Countryman  
Richard Diforio  
Phil Dollar  
Yassi Irajpanah  
Sarah Lax  
Julia Markley  
Peter Northrup  
Kris Peterson  
Jerry Rosette  
Stephanie Sammons  
Jay Stammer



ImpactNWSince1966



@ImpactNW



Impact NW

# COMMUNITY OF SUPPORT

Impact NW extends a heartfelt thank you to our supporters. Your generosity allows us to expand programming that alleviates the effects of poverty and helps people prosper.

## **\$100,000+**

Daimler Trucks NA LLC

## **\$50,000 - \$99,000**

Spirit Mountain Community Fund  
Vigor Industrial LLC

## **\$25,000 - \$49,999**

Anonymous  
City of Beaverton  
Fehsenfeld Family Foundation  
Meyer Memorial Trust  
PGE Foundation  
Safeco Insurance Foundation  
Yoshida's Sand in the City

## **\$10,000 - \$24,999**

Anonymous  
Bank of America Charitable Foundation  
Children's Trust Fund of Oregon  
Community Foundation for Southwest Washington  
Coverall of Oregon  
EMS Management LLC  
Genentech, Inc.  
Juan Young Trust  
The Oregon Community Foundation  
The Reser Family Foundation  
Schamp Family Fund of the OCF  
The Margaret Watt Edwards Foundation  
Trust Management Services, LLC  
Joseph E. Weston Public Foundation of the OCF

## **\$5,000 - \$9,999**

Edwards Lienhart Family Foundation  
GBD Architects  
Holzman Foundation  
Intel Volunteer Grant Program  
Nordstrom, Inc. - Contributions  
NW Natural Gas Company  
PCC Structurals  
Rose E. Tucker Charitable Trust  
Harold & Arlene Schnitzer CARE Foundation  
Jerry Spigal  
United Way of the Columbia-Willamette

Verizon HopeLine  
Wells Fargo Advisors

## **\$2,500 - \$4,999**

BNSF Foundation  
Robert Brady Charitable Trust  
Charis Fund  
City of Hillsboro  
Ken Edwards  
Greenbrier Companies  
Heffernan Group Foundation  
Medline Industries  
METRO  
PECO Manufacturing  
Gerald H. Rosette  
Schwab Charitable Fund  
Susan Stoltenberg  
The T.F. Dixon Family Foundation  
The/Benevity Community Impact Fund  
Christine Vernier

## **\$1,000 - \$2,499**

AC Portland  
AKT Group LLP  
Anonymous  
Beaverton Foursquare Church  
Bruce Brown  
Carmax  
Coffman Excavation  
Kirsten J. Day  
Richard Deats  
Philip S. Dollar  
Bruce Drake  
Easton Koehler Family Fund of the OCF  
Eastrose Fellowship Unitarian Universalist  
First Republic Bank  
James Flynn  
Fred Meyer, Inc.  
Robert D. Geddes  
Brenda Grootendorst  
Thomas D. Harburg  
HDR Engineering, Inc.  
Robert Hedlund  
Gerald R. Hein  
Barry Hendrix  
HomeStreet Bank  
International Union of Operating Engineers

- Local 701  
Irwin Foundation  
Fred Kawabata  
Geraldine Kawabata  
Kristine Koneck  
Kurt and Mary Koehler Fund of the OCF  
Mike Lewis  
Julia E. Markley  
Robert Matheson  
Mentor Graphics Foundation  
Occupational Orthopedics, LLC  
Oregon Medical Evaluations, Inc  
Oregon State Drywall, LLC  
Perkins Coie Foundation  
Kris Peterson  
Richard Pierson  
David J. Pollock  
Portland Housing Bureau  
Randy Roach  
Thomas C. Ryan  
Dan R. Saltzman  
Henry D. Specht  
Tony Spiering  
James M. Stocks  
Bruce C. Stoltenberg  
Umpqua Bank - SW Columbia  
Valley Community Presbyterian Church  
Weiss Fund of The Oregon Community Foundation  
Michael B. Whiteford

## **\$500 - \$999**

Anonymous  
Molly Burns  
Salena Clayton  
Brian A. Davis  
Charles Deister  
Shari Eiesland  
Stephen Jeanson  
Kairos-Milwaukie United Church of Christ  
Henry Kantor  
The Kroger Company Foundation  
Robert C. McCarthy  
Chena M. Mesling  
Linda Nilsen-Solares  
Northrup Corporation  
Alexis Packard

PGE  
Silicon Valley Community Foundation  
Izetta Smith  
Kathleen S. Swift  
Vital Life, A Marquis and Consonus  
Foundation  
Annarie Wergeland  
Whiskey, Ink, & Lace  
Katherine M. Zelko

**\$250 - \$499**

Roy Abramowitz  
Kris Alman  
David Altman  
Bahram Behboodi  
James F. Beyl  
Paul Burkhardt  
Gene Callan  
Cambia Health Foundation  
Claudia Coke  
Tim Conway  
Jacqueline Damon  
Jeni Davis  
Jeanne M. Debenedetti Keyes  
Richard Diforio  
Dean Dordevic  
Daniel Duggan  
Charles W. Emerick  
Employees Community Fund of Boeing  
Portland  
Tom Forsythe  
Larry Fox

Dennis P. Gilliam  
Oscar M. Gilson  
Jon R. Grasle  
Allen R. Greene  
Luanna J. Grow  
Patricia D. Hogan  
Amy Houchen  
Dylan Hydes  
JPMorgan Chase  
Kaiser Foundation Health Plan of the  
Northwest  
Lampros Steel  
Michele Laraia  
Jennifer Larsen  
Esther Lewis  
Todd J. Littlehales  
Maher & Tolleson LLC  
Mary-Lynne McNeill  
Carmen Merlo  
Anne Mersereau  
Randolph L. Miller  
Morgan Stanley  
Greg Mowe  
Mt. Scott Park Presbyterian Church  
Network For Good  
Robert Nibley  
Oregon AFSCME Council 75  
Oregon Coalition Against Domestic and  
Sexual Violence  
Oregon Elder Law  
John Parkhurst  
Mary Anne Peterson

Hilary Pickerel  
David G. Quinn  
Charles Rooks  
Deborah B. Ross  
Russian Immersion PTA  
Karen Schademan  
Keith Skille  
Carl Snook  
Ladislao Soltesz  
Gina Somerscales  
Suzanne E. Sullivan  
Anna Tarnoff  
Hung Tran  
Beverly M. Trover  
Waggener Edstrom  
Craig Westling  
Walt Williams  
Renata E. Wilson  
WinCo Foods  
Deborah Wright-Shillingburg

**COMMUNITY PARTNERSHIPS**

Clark County  
Clackamas County  
Chess for Success  
Heat Oregon  
Home Forward  
Human Solutions  
Metro  
Multnomah County  
Neighborhood Partnership Fund  
Oregon Department of Education  
Oregon Department of Human  
Services  
Oregon Department of Justice  
Oregon Food Bank

Portland Children's Levy  
Portland Development Commission  
Portland Housing Bureau  
Portland Nursery  
Portland Public Schools  
Portland State University  
Providence Health and Services  
Ride Connection  
Rockwood Pathways Project  
Transition Projects  
Washington County  
US Department of Housing and Urban  
Development





*Since 1966*

INSPIRING HOPE. EMPOWERING INDEPENDENCE.

**PO BOX 33530**  
**PORTLAND, OR 97292**  
**503.294.7452**  
**[WWW.IMPACTNW.ORG](http://WWW.IMPACTNW.ORG)**